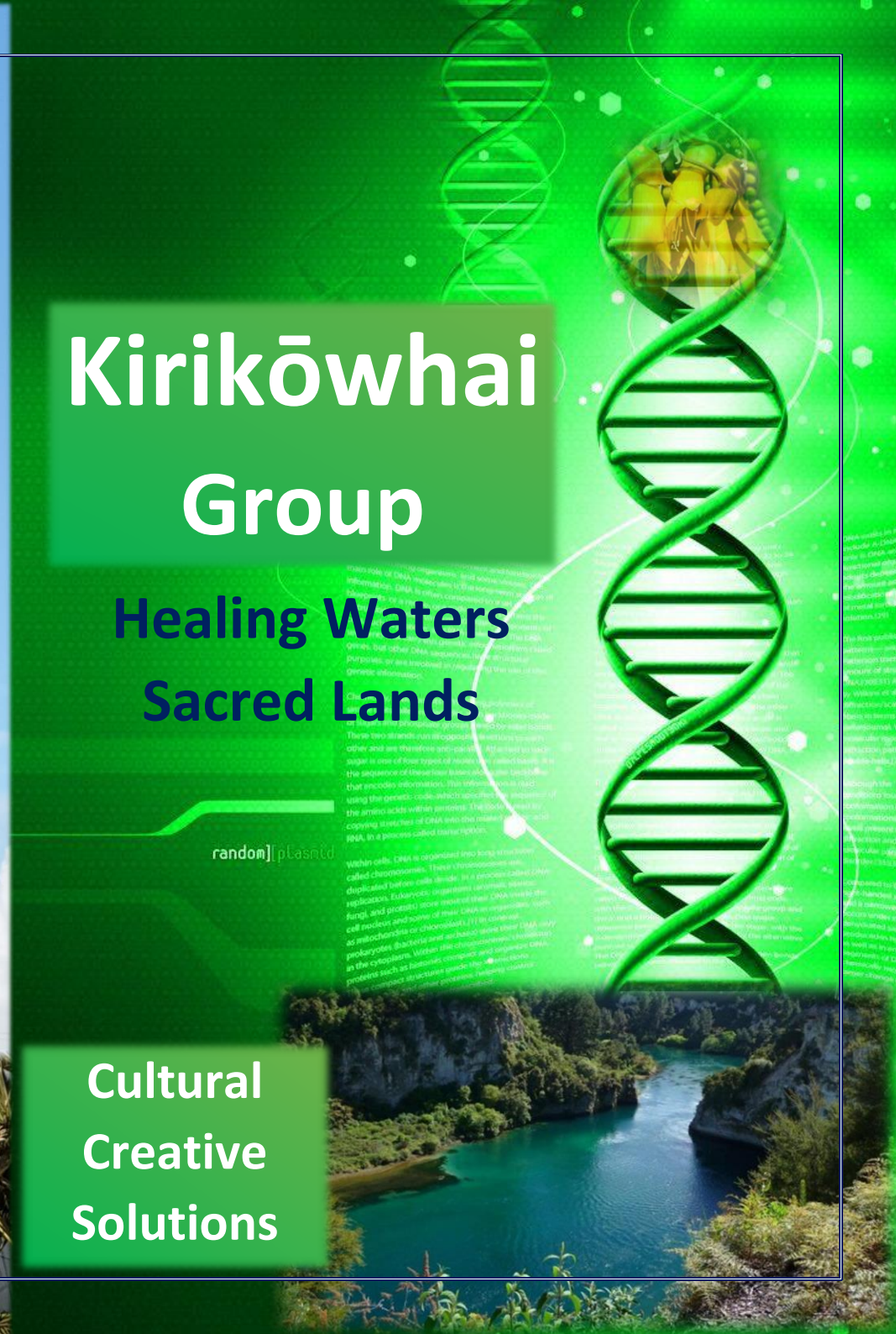




# Kirikōwhai Group

## Healing Waters Sacred Lands

### Cultural Creative Solutions



## REMEMBERING WHAEA KIRIKŌWHAI KINGI

We honour the beautiful name of our wonderful Whaea and Kuia **Kirikōwhai Evelyn Rose Ivy (Tuss) Te Wiata Kingi** of Ngāti Māhuta, Ngāti Amaru, Ngāti Tamaoho, Waikato Tainui, and Raukawa. Kirikōwhai was the daughter of the great Māori opera singer and Tōhunga Whakairo the late Inia Te Wiata and Wakena Ivy Te Wiata. A resolute supporter of Te Kiingitanga and Waikato Tainui tikanga, she was raised under the guiding hand of the late Te Puea Hērangi and many Kaumatua and Kuia at Tūrangawaewae Marae where she grew up and learned the art of manaakitanga. In time, she became an amazing chef and was famous for many delicious recipes!

Kirikōwhai was married to Tōhunga Te Uranga o Te Rā Kingi of Te Whānau a Apanui, Ngai Tai, Whakatōhea, and Kāti Māmoe for many decades. With the blessing of Te Arikinui Te Atairangikaahu, and the support of their whānau and community, they created Kirikiriroa Marae, where she remained steadfast as Ahi Kaa and the Kuia of the Marae. Kirikōwhai and Wikuki were staunch advocates of Te Reo Māori and composed many waiata and haka that are widely sung throughout Aotearoa today.

Learning from her mother Wakena, traditional knowledge holders, elders, and her lifelong mentor Sister Heeni Wharemaru, Kirikōwhai had extensive experience and knowledge of the Waikato, the lands and river, plants, fish and water life, and of course she had a deep love for the whānau and hapū of the river. She understood the importance of the rongoā the river provided – spiritual, emotional, and physical. This love of the Waikato she imparted to her tamariki and many mokopuna, all of whom she loved dearly.

We hope that Kirikōwhai and Te Uranga o Te Rā watch over us as we work diligently to revive and beautify their wai and whenua, waters and lands.

*Haere atu rā kōrua*

*Ki te Mātua nui i te rangi*

*Te Poho o Te Atua*

*Haere atu rā, haere atu rā, moe mai rā.*



Kiri



## Our Promise

*Across lands of icy snow  
and mysterious mists;  
rushing waters and  
trickling streams;  
lofty mountains and  
verdant valleys ...*

*We seek our places and  
our spaces – once again  
And they seek us, call for us  
– as they always have*

*Our Mother and Father,  
Papatūānuku and Ranginui  
-our Touchstones of Belonging*

*You are our healers,  
our teachers, our guides  
And we are your guardians,  
your sentries, your friends*

*Together we are Kaitiaki  
- our mauri binds us together  
Forever ...*

*Here we learn, shape and share  
our ancient wisdom,  
tikanga, mātauranga,  
symbols and stories*

*We breathe life again  
into our wai, our whenua*

*As we honour and dignify  
the mauri, the life-force,  
spirit and grace of  
our peoples and their places*

*... for our generations  
past, present and future ...*



## Kirikōwhai Group Our Vision

Our vision is to revitalise our  
waters and lands; restoring their  
mauri and beauty; creating  
wonderful taonga, treasures, as a  
gift for our tūpuna, whānau, and  
mokopuna yet to come ...



### Page

2	Remembering Whaea Kirikōwhai Kingi
3	Our Promise; Our Vision
4	Our Values and Principles
5	Mauri - Wānanga; Knowledge; Storytelling
6	Kōtahi - Whakapapa; Whānaungatanga
7	Planting & Garden Design
8	Eco-sourced Native Plants
9	Rural Property Development
10	Fencing – Construction; Maintenance
11	Taonga Creation; Multimedia Artworks
12	GIS Mapping; GIS Training
13	Technology VR AR XPs
14	Rangatiratanga – Thrive; Evaluation
15	Kirikōwhai Group - Our Team
16	Organisational Reporting Structure
17	Waikato – The River of Life
18	Waikato Project Results Framework
19	Organisational Information
20	Partners and Associates

**KIRIKŌWHAI GROUP** - Profile & Blueprint for Transformation

Prepared by Wikuki Kingi & Tania Wolfgramm

Tōhunga & Executive Trustees | Pou Kapua Creations Trust

E: [tania.wolfgramm@gmail.com](mailto:tania.wolfgramm@gmail.com) T: 021 0876 1400

kōwhai Group

# KIRIKŌWHAI GROUP

## Our Values, Our Principles

### MAURI ... HONOUR AND ENHANCE LIFE FORCE

Spirit of Wai, Whenua, Whānau  
Kawa / Tikanga / Ethical Engagement  
Aroha & Compassion / Respect & Dignity  
Restoration and Protection

### RANGATIRATANGA ... LEAD AND THRIVE

- Cultural & Creative Leadership
- Positive Benefits for Māori
- **Wellbeing:** Cultural, Spiritual, Physical, Environmental, Economic
- **Celebrate:** Realise Vision; Share

### KAITIAKITANGA ... GUARDIANSHIP & PRESERVATION

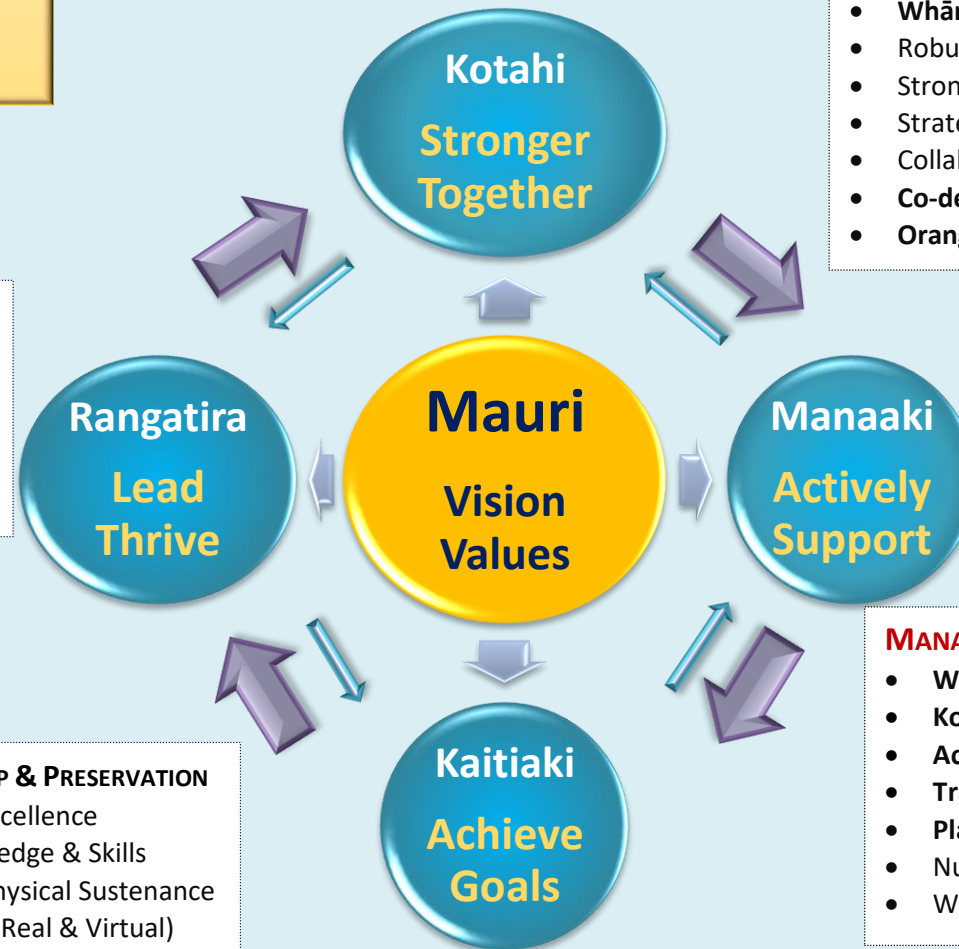
- **Tōhungatanga** – Creative Excellence
- **Mātauranga Māori** – Knowledge & Skills
- **Sustainability:** Spiritual & Physical Sustenance
- Create **Taonga** / Guardians (Real & Virtual)
- **Achieve:** Deliverables, Goals, Outcomes

### KOTAHITANGA ... WORKING TOGETHER IN HARMONY

- **Whakapapa:** Genealogy; Ancestral Connections
- **Whānaungatanga:** Inclusive, Participative
- Robust & Dynamic **Organisation**
- Strong and Resilient **Relationships**
- Strategic Networks / **Partnerships**
- Collaborative **Decision-Making**
- **Co-design;** Strategise; Plan
- **Oranga:** Health and Safety

### MANAAKITANGA ... WHOLE OF SYSTEMS SOLUTIONS

- **Whakamana:** Integrated, Holistic Approach
- **Koha:** Reciprocity and Generosity
- **Activate:** Implement; Operationalise; Innovate
- **Training;** Capability & Capacity Building
- **Planting** & Garden Design
- Nursery Development; **Riparian** Remediation
- Water & Land Protection & **Fencing**



**Kirikōwhai Group** is guided by an understanding that our whānau, hapū, iwi, and communities have multiple and unique worldviews and have ways of assessing merit based on their own value systems. Our Hakamana approach provides for an agreement of ethical boundaries; holistic integration, including mechanisms and processes for effective practice applied across complex and often chaotic environments.

# KIRIKŌWHAI GROUP

Mauri	Life force / Wellbeing
Wairua	Spirit / Vision
Whakapapa	Name / Identity
Tinana	Body / Physical Condition
Manawa	Heart / Experience
Hinengaro	Mind / Learning
Kotahitanga	Relationship / Connection
Oranga	Health / Wellbeing
Mana	Strength / Authority
Te Ao	Environment / Context

*Nā te aroha, ka puta mai te hōhonutanga o te whakaaro*

*First there is aroha; an understanding that all people, all taonga, all things share the pathway of life; appreciating that all are connected to each other and all must be cared for in the spirit of love.*

*Then there is a blossoming, a manifestation of the deepest knowledge that allows one's thoughts to be made known ... those thoughts, from the deepest recesses of the mind, realised in wananga, sharing learning, study, in other ways of seeking to know.*

*Wānanga - Tōhunga Te Uranga o Te Ra Kingi, 2008*

## Healing Waters, Sacred Lands

**MAURI  
VISION**

**MAURI ... HONOUR AND ENHANCE LIFE FORCE**

Spirit of Wai, Whenua, Whānau

Kawa / Tikanga / Ethical Engagement

Aroha & Compassion / Respect & Dignity

Restoration and Protection

**Wānanga  
Mātauranga**

# KIRIKŌWHAI GROUP

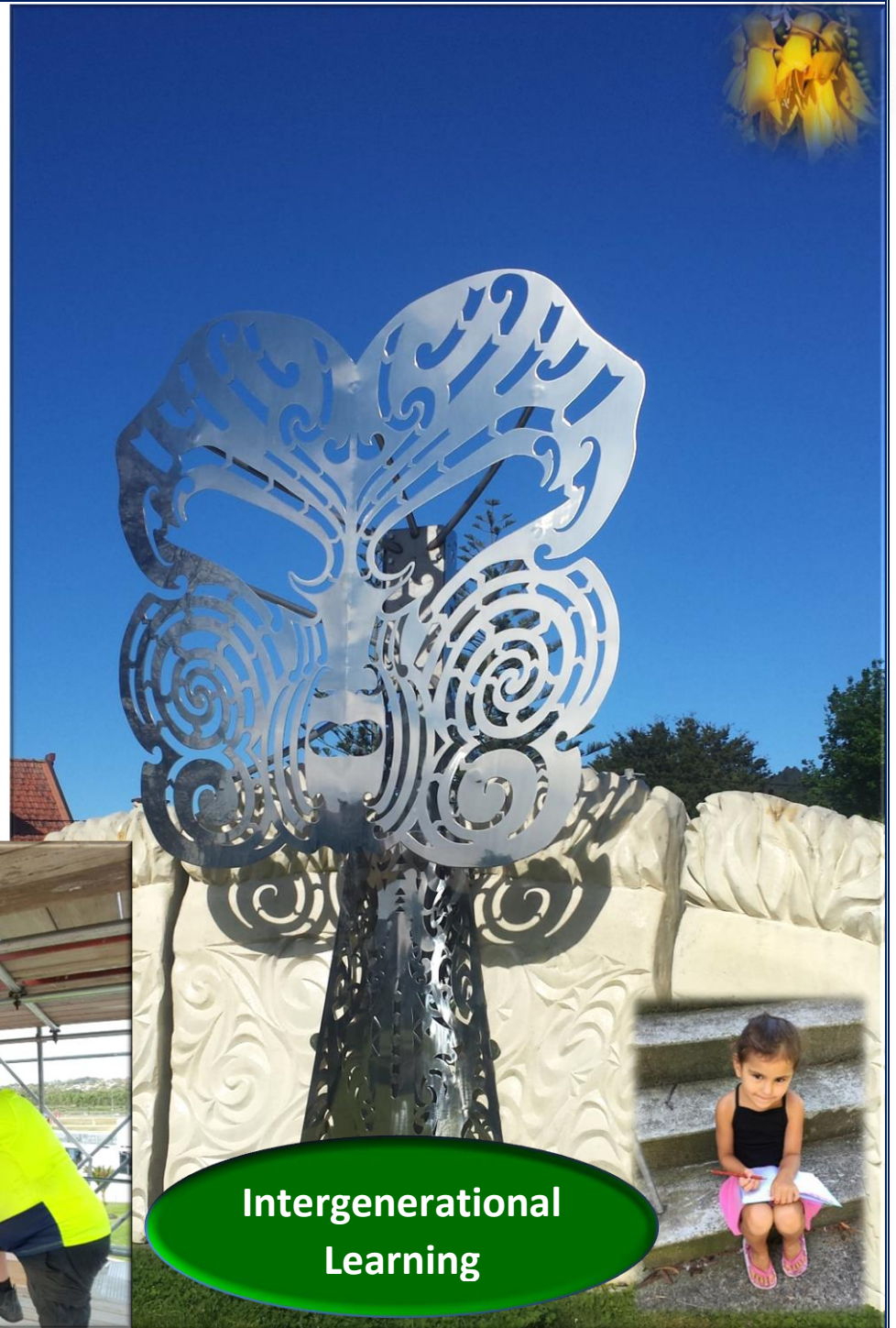
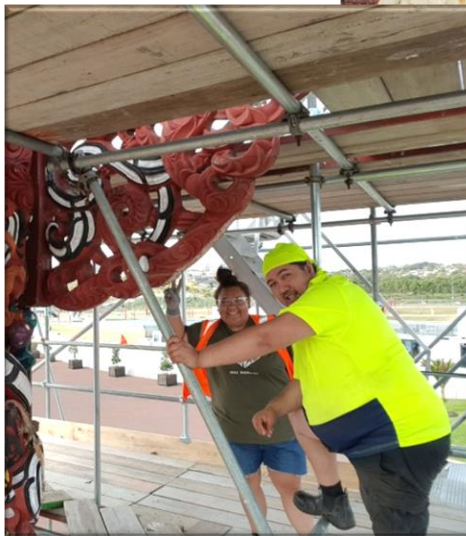


## KOTAHITANGA ... WORKING TOGETHER IN HARMONY

- Whakapapa: Ancestral Connection to Place
- Whanaungatanga: Inclusive, Participative
- Robust & Dynamic Organisation
- Strong and Resilient Relationships
- Strategic Networks / Partnerships
- Collaborative Decision-Making
- Co-design; Strategise; Plan

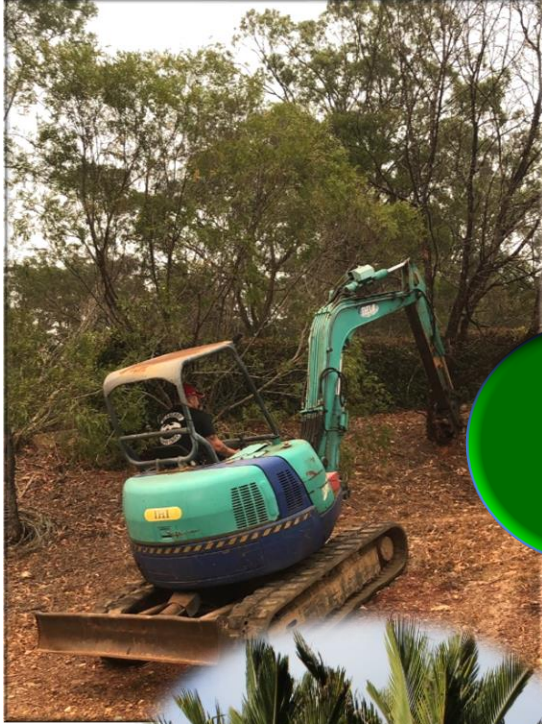
**KOTAHI  
RELATE**

**Cultural  
Intelligence**



**Intergenerational  
Learning**

# KIRIKŌWHAI GROUP

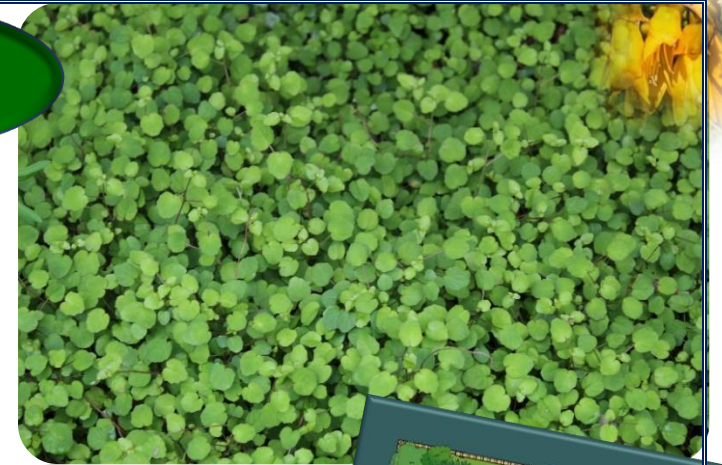


Site  
Prep

## WONDERFUL RESULTS AND BENEFITS

- ✓ Beautiful native gardens
- ✓ Lands are nourished
- ✓ Plant life is nurtured
- ✓ A place for whānau and friends to enjoy
- ✓ Protection of taonga and puna
- ✓ Improved environmental outcomes

Planting



Garden  
Design

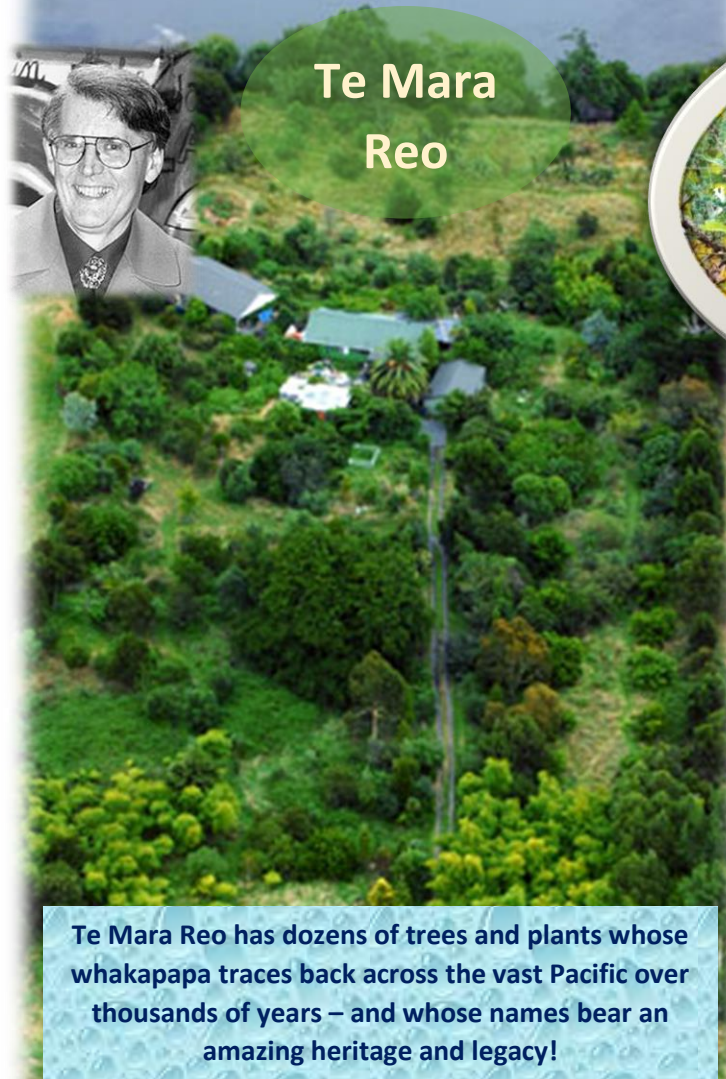


# Eco-Sourced Native Plant Specialists

On the Waikato River

KIRIKŌWHAI GROUP

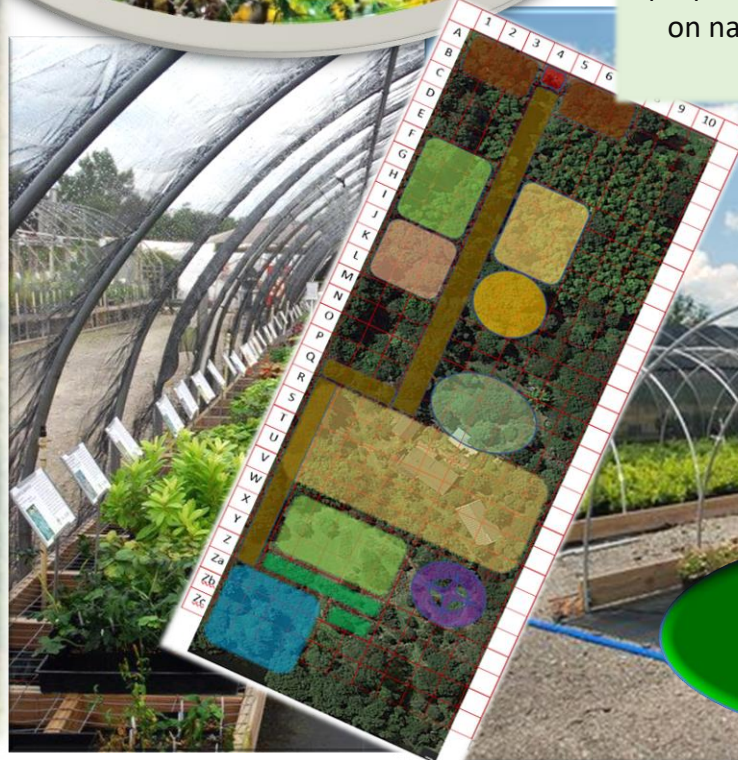
Te Mara  
Reo



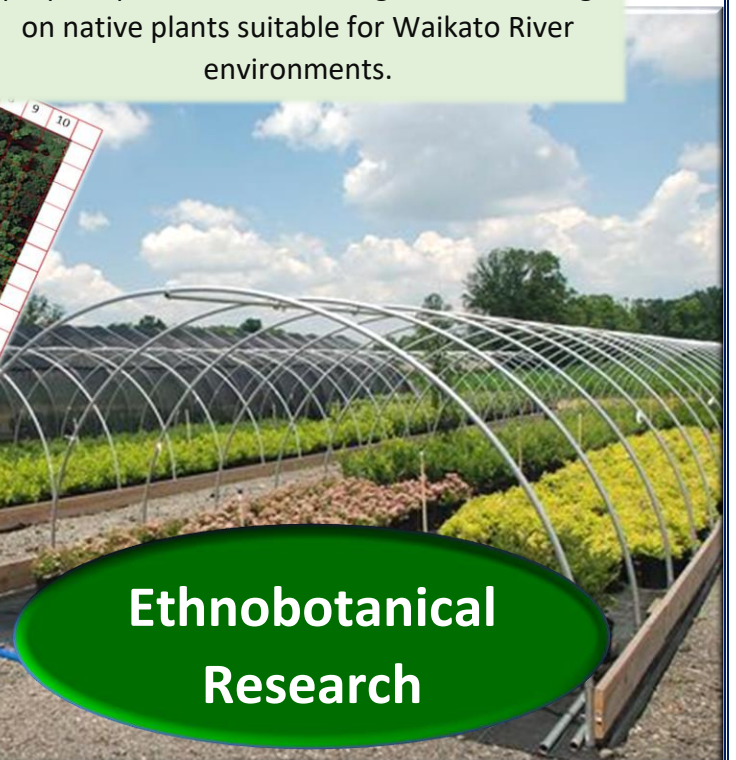
Te Mara Reo has dozens of trees and plants whose whakapapa traces back across the vast Pacific over thousands of years – and whose names bear an amazing heritage and legacy!



Kirikōwhai Group will work in partnership with Te Māra Reo, designing and developing fit-for-purpose plant nurseries and gardens focusing on native plants suitable for Waikato River environments.



Ethnobotanical  
Research





# Rural Property Development



## LAND DEVELOPMENT AND SITE PROTECTION

- Stock logistics - cattle and horses
- Rural road design, construction and maintenance
- Excavation and ground / dirt work on a wide range of platforms; excavators through to track loaders
- Property plant and garden design and maintenance
- Slashing and cutting
- Tree works - planting, falling, milling, cutting splits, pruning, hedging
- Spraying and plant management
- Irrigation and dam design and construction
- Drainage systems
- Rural building design and construction (farm buildings, sheds)



## PLANT & LIGHT VEHICLE MECHANIC | AUTO ELECTRICIAN | DIAGNOSTICS & LOGISTICS

- Electrical and hydraulic fault diagnostics
- Stationary and mobile diesel engines, including
  - Cranes
  - Excavation equipment
  - Boats and marine engines
  - Trucks, including concrete trucks
  - Motor vehicles
- Field service break downs
- PLC customising, installation, service and repair
- Radio control remote service and repair
- Welding and fabrication
- Product design, development, manufacture inc touch pad layout & throttle modules
- Electrical harness design and manufacturing

# Vehicles & Maintenance



## EXPERIENCED, LICENCED

### OPERATORS

- Excavators
- Tractors
- Backhoes
- Forklifts
- Wheel and track loaders
- Heavy Trucks (Rigid & Articulated)
- Bulldozers
- Elevated Work Platforms (inc. boom lifts)



## Fencing

Fencing gives you this amazing opportunity to see something for your work at the end of the day. It also gives you a strong connection to the land in which you are fencing. At the end of it you remember every ant mound, every rock, every waterway, every feature of that land, and you are somehow tied to that place as long as your fence stands, as a statement that 'you were here, and this is what you created'.

Years and years after a fence has been completed you can drive past that fence and put a smile on your face, remembering the trials that were in front of you, and how you could overcome them and create something great!

### FENCING, GATES, RETAINING WALLS

- Fencing design, and installation; construction of fencing from various materials including wood and steel
  - post and rail
  - security; electrical
- Fence maintenance and restoration
- Gate design and installations
- Property entrances (e.g. front, back)
- Equestrian areas - quarantine, adjustment, dressage arenas, course yards
- Retaining walls design and building

## Construction



Our fences will provide excellent protection for taonga and puna by keeping livestock out of those significant sites and protected areas.

A fence is a relationship, at times a compromise, between the flow of the land and the efficiency of straight lines. I am very particular when it comes to the preparation and assembly of fencing and I take the time to plan, and the time to finish, each fence to the highest of quality, keeping in mind that people will see my work for many years.

- *Dusty Burrell, Master Fencer*



## Maintenance

**HONOURING TŌHUNGATANGA ... EXPRESSING TE AO MĀORI ... EXPERIENCING ANCIENT FUTURES**

**KIRIKŌWHAI GROUP**



**We design and create Taonga Toi** for Aotearoa that are evocative, inspiring, and truly transformative in multiple ways.

- Each and every Taonga Toi has wairua, tapu, mana; each has mauri, a life-force that needs to be nurtured, cared for and protected
- Taonga Toi are symbols of our culture, spirit and identity; reflections of Tangata Whenua heritage; expressions of Te Ao Māori
- Taonga Toi can teach and heal through expressions of ancient knowledge, traditional stories and contemporary understandings
- Taonga Toi provide unique positive emotional experiences for each mokopuna, tamariki, wāhine, tāne, koro, kuia, whānau, the communities of Aotearoa



**Taonga Creation**

**AMAZING TREASURES; WONDERFUL BENEFITS**

- Taonga, Pou embody whānau, hapū, iwi stories and histories
- Everyone enjoys the beauty and wonder of the taonga
- Nurtures a strong sense of belonging
- Brings pride and joy to mana whenua and local communities



**Multimedia Artworks**

**KAITIAKITANGA ... GUARDIANSHIP & PRESERVATION**

- **Tōhungatanga** – Creative Excellence
- **Mātauranga Maori** – Knowledge & Skills
- **Sustainability:** Spiritual & Physical Sustenance
- Create Taonga / Taniwha / Guardians





**KIRIKŌWHAI GROUP**

# GIS Mapping

**GIS Data Capture:** Sourcing and building the data i.e. land parcels

**GIS Data Analysis:** Analysing the information and interpreting the data flow

**GIS Map Production:** Producing the map outputs  
**GIS Project Management and Build:** Managing the construction of a GIS

**GIS Needs Analysis:** Identifying the organisational needs and providing recommendations around GIS requirements

- ### EXCELLENT MAPPING RESULTS
- ✓ Comprehensive maps and 3D imagery accessible in multiple platforms (e.g. Google Earth)
  - ✓ Accurate GPS and GIS geospatial data (longitude & latitude)
  - ✓ Family and friends can connect virtually from anywhere in the world
  - ✓ Excellence navigation and directions capability (including landmarks)
  - ✓ Improved environmental and disaster planning and response
  - ✓ Increased capability with technology training and business development
  - ✓ Authentic stories and local knowledge shared on global platforms

**GOOGLE GEOSPATIAL TOOLS**  
Google has a wide range of Geo-spatial tools these include Google Earth, Google Earth Engine, Time Lapse, My Maps, Fusion Tables and Tour Builder. They each have a specific purpose and can provide some stunning visual imagery for work that you would like to undertake.

# Data Analysis & Management

**GIS Training:** Wānanga and workshops around creating, manipulating and presenting data for your organisation  
**Google Geospatial Tools:** We provide training with these tools and can show you how maximise these with other GIS tools.

**Sacred Sites and Sites of Significance**  
Identification, mapping, depiction, and information of sites of significance, presentation

# GIS Training



Group

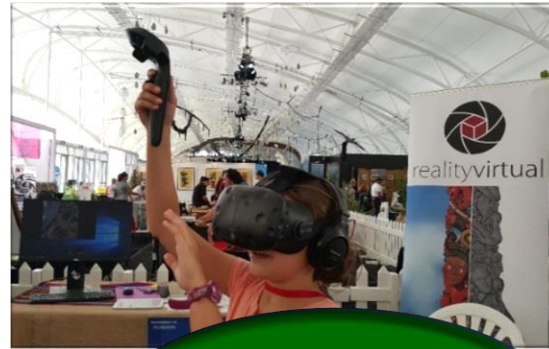


**Drone Photography:** We use DJI's drones to produce high quality still imagery and video footage which we can then incorporate into our mapping services.

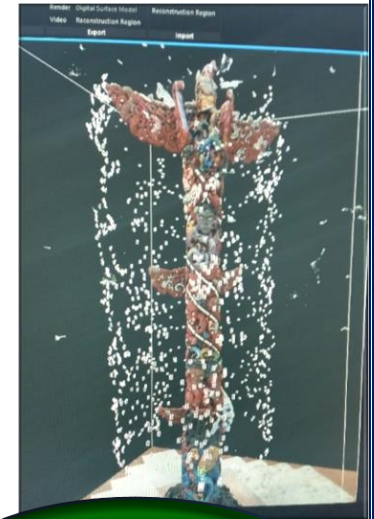
## WE SUPPORT CULTURAL CONSERVATION WITH THE LATEST TECHNOLOGY

Many of the world's cultural and natural heritage sites are under threat from both people and environment. Many of these cultural and natural treasures, some built by people, others by nature may not be available for people to see and experience, and our dream is to bring the stories, histories, and legends of these incredible treasures to life in virtual reality.

Collectively we have decades of experience and expertise across multiple capabilities including design; data science and analytics; technological and platform design and development; immersive (Virtual / Augmented / Mixed Reality) experience technologies; digital storytelling, media production and product development, and platform development. We combine the latest in digital innovation and world-class VR technology to create incredible 'being there' digital and online experiences that can help to shape our age – and the hearts of minds of generations to come.



**Technology  
VR AR XPs**



**Virtual  
Reality POU**

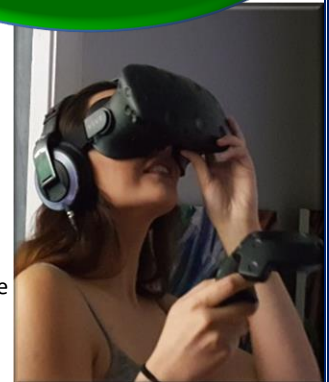


**global reach  
initiative**

**Authentic stories and local  
knowledge shared on local  
and global platforms**

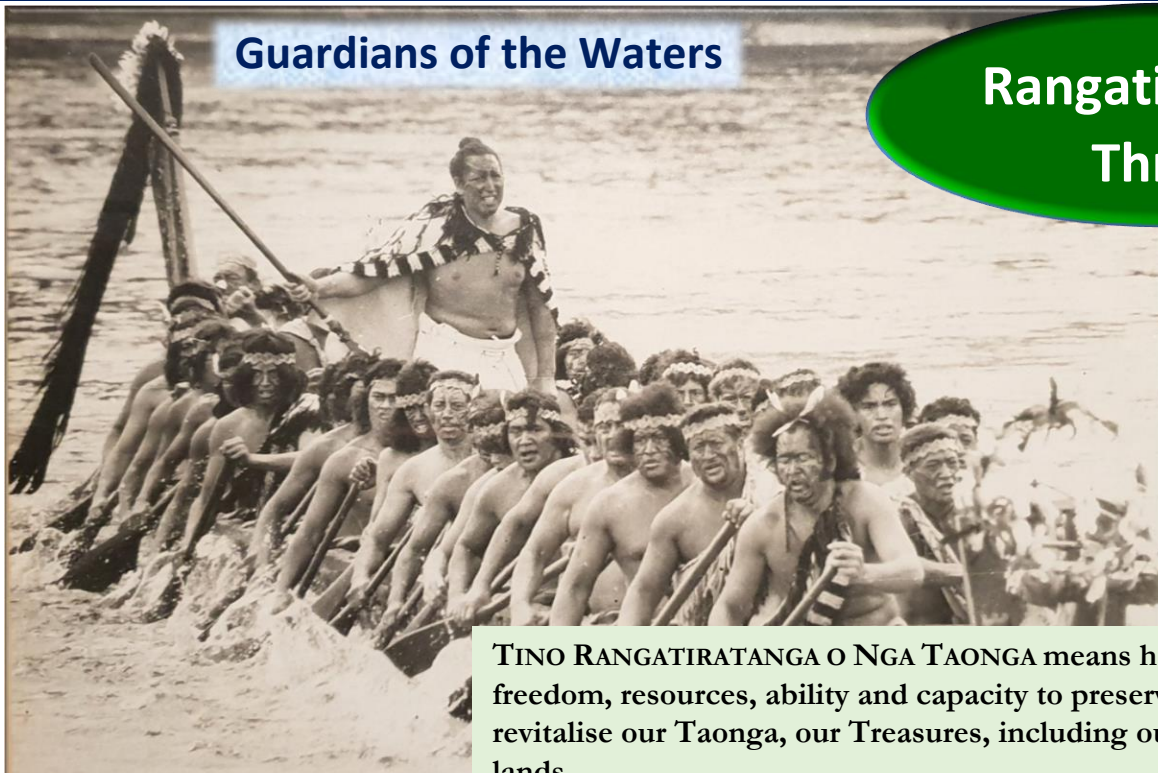
## LET'S CREATE SOMETHING UNIQUE AND REMARKABLE!

**Kirikōwhai Group** can create wonderful cultural treasures in virtual reality. These VR treasures will express stories of your hapu, iwi, culture, lands, people, histories and legends. We co-create the best multisensory VR and AR experiences and technological adventures that will change the way people sense the world; awakening and strengthening their relationships to place, space, humanity and to nature.



Profile

## Guardians of the Waters



## KIRIKŌWHAI GROUP



## Rangatiratanga Thrive

TINO RANGATIRATANGA O NGA TAONGA means having the freedom, resources, ability and capacity to preserve, restore and revitalise our Taonga, our Treasures, including our waters and lands.

It means that we can create, generate, design, develop, produce, and distribute creative works, arts, and technologies that express and support the mana of tangata whenua, the values, culture, tikanga and protocols, approaches and methods, language, histories, stories, worldviews, knowledge, and learning systems of Te Ao Māori.

For Māori, TINO RANGATIRATANGA O NGA TAONGA means the activation and support of a complete yet dynamic ecosystem that supports Māori as active owners, creators, designers, developers, builders, manufacturers and traders of creative works, arts, and technologies that increase Māori wealth and improve their cultural, social, ecological, and spiritual health and wellbeing across multiple domains.

*Wānanga – Wikuki Kingi & Tania Wolfgramm,  
Kirikōwhai Group, Pou Kapua Creations*



### RANGATIRATANGA ... LEAD AND THRIVE

- ✓ Cultural & Creative **Leadership**
- ✓ Positive **Benefits** for Māori
- ✓ **Wellbeing:** Cultural, Spiritual, Physical, Environmental, Economic
- ✓ **Celebrate:** Realise Vision; Share Success

## Transformative Evaluation

### Our HAKAMANA Model of Evaluation

- Integrates Indigenous wisdom with modern methodologies;
- Enables one to move through complex systems and dynamic relationships as you focus on their interactions; and
- Provides a framework for one to create robust solutions to complex problems.

see also [www.hakamana.com](http://www.hakamana.com)



**KIRIKŌWHAI GROUP - OUR TEAM**



**Dr Richard Benton**  
*Language Historian  
Planting Specialist*



**Ratauhinga and Takirimaiteatea Turner**  
*Ko Taupiri te Maunga, Ko Waikato te Awa  
Kaumatua mo te Kiingitanga  
Turangawaewae, Waikato Tainui*



**Mamae Takerei**  
*Turangawawae Waikato  
River Culture Expert*



**Martin Matekino Ngata**  
*Waikato Tainui Kaumatua,  
Landowner, Farmer*



**Isaac Rolfe**  
*Computer Scientist  
Software Platforms*



**Rainui Teihotua**  
*Design Specialist  
Digital Narration*



**Dustin Burrell**  
*Rural Development  
Fencing Specialist*



**Vincent Wolfgramm**  
*Mathematician  
Environmental Scientist*



**Wikuki Kingi**  
*Tōhunga Toi Ake  
Cultural Symbolologist*



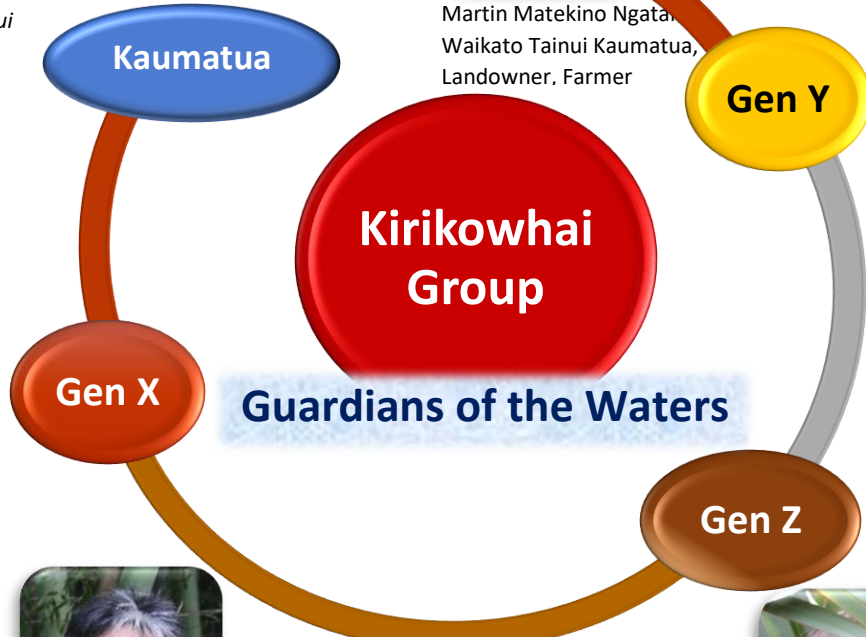
**Tania Wolfgramm**  
*Executive Director  
Systems Sculptor*



**Moka Apiti**  
*GIS Specialist/ UAV  
Geospatial Mapping*



**Dr Rachel Wolfgramm**  
*Specialist - International  
Business & Sustainability*



**Alan Benton**  
*Communications  
Project Logistics*



**Aliyah Waimirangi**  
*Kainga Toi / Designer  
Rangatahi / Youth Rep*



**Tawhirimatea Rosieur**  
*Kainga Toi / Arts  
Maintenance*



**Darcy Russell**  
*Kainga Toi / Media  
Garden Development*



**Ashlin Rolfe**  
*Kainga Toi  
Creative Writer*

**Kirikōwhai Group Alliances**

- Whaotapu Trust
- Te Ranga Arts Academy
- Data Sovereignty Network
- Native American Academy
- Indigenous Education Institute
- Auckland University of Technology (AUT)
- The Cultural Conservancy | TE HA Alliance
- University of Auckland (UoA) School of Business
- Local Hapū / Iwi / Communities across Aotearoa NZ
- Pacific Networks & Global Indigenous Alliances

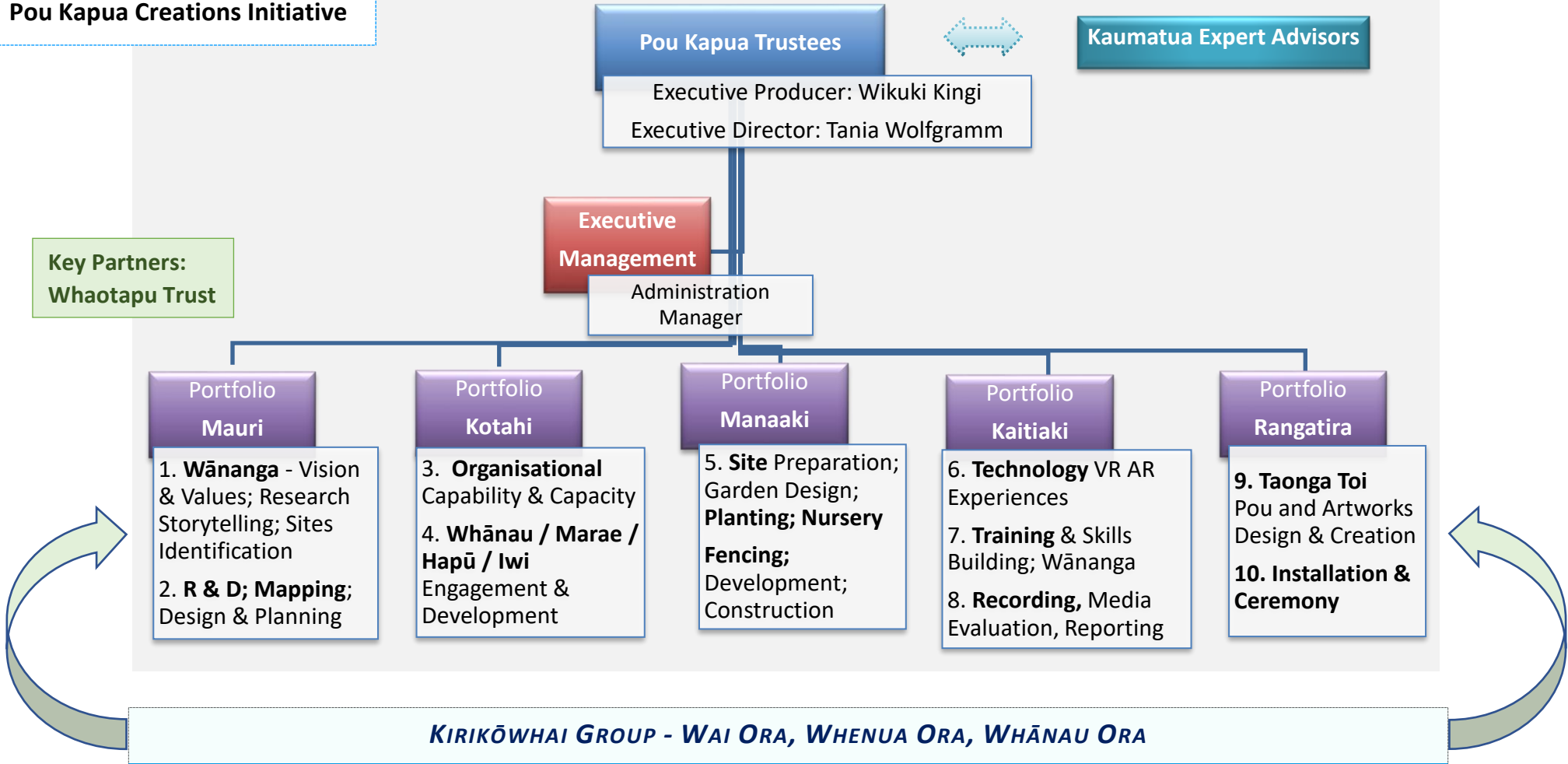
**Expert Advisors**

- Vern Rosieur, Tōhunga Toi Ake, Whaotapu Trust
- Charles Harrison; Plant / Propagation Specialist



### ORGANISATIONAL REPORTING STRUCTURE AND PORTFOLIOS

Kirikōwhai Group is a Pou Kapua Creations Initiative



Key Partners: Whaotapu Trust

**KIRIKŌWHAI GROUP - WAI ORA, WHENUA ORA, WHĀNAU ORA**





**Tooku awa koiora me ngoona pikonga  
He kura tangihia o te maataamuri**

*Kiingi Taawhiao*

The river of life, each curve  
more beautiful than the last

**Waikato-Tainui Iwi; 33 Hapuu; 68 Raupatu Marae; 68,000+ Tribal Members**



**Waikato  
The River of Life**

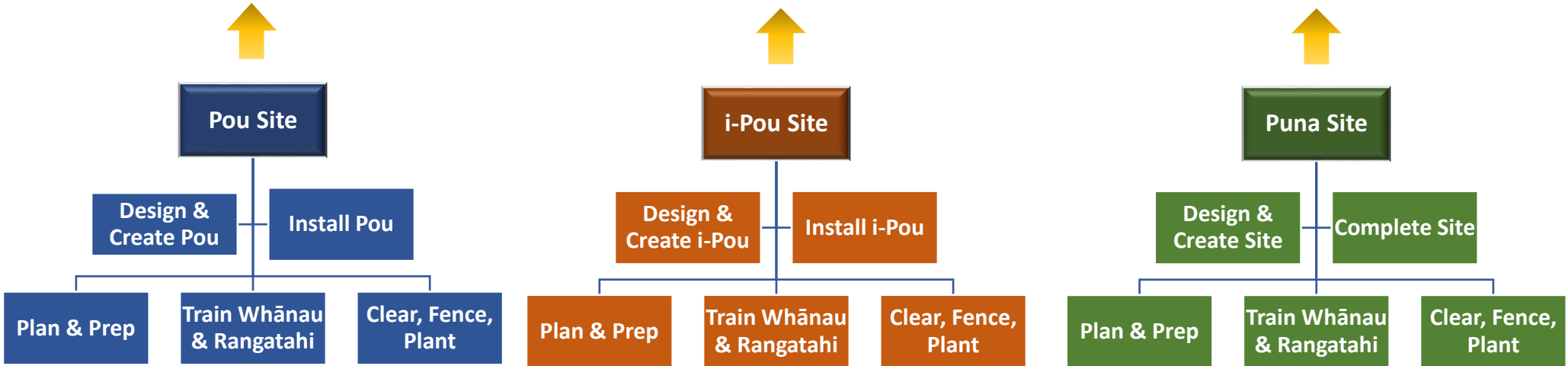
Kirikōwhai Group supports the vision of Waikato Tainui iwi and hapuu to exercise mana whakahaere of their rohe; their authority, rights and responsibilities to ensure that the mauri, the life force of their river and lands are restored and protected - for now and for generations to come...

**KIRIKŌWHAI GROUP ... TE AWA - HEALING WATERS, SACRED LANDS**

**WRA VISION: TO RESTORE AND PROTECT THE HEALTH AND WELLBEING OF THE WAIKATO RIVER**

2022 Location:  
3 Sites at Mercer ki  
Te Puuaha o Waikato

**OUR VISION: THE VITALITY AND BEAUTY OF THE WAIKATO IS RESTORED, PROTECTED, AND ENHANCED**



**KAUPAPA: RELATIONSHIP BUILDING (HAPŪ, MARAE, RANGATAHI, LANDOWNERS); WĀNANGA; SITE ID; INITIAL CONCEPTS**

**BUILDING CAPABILITY AND CAPACITY ... PROJECT PLANNING & MANAGEMENT**

**WAI ORA - WHENUA ORA - WHĀNAU ORA**



Registered / Legal / Contracting Entity for Kirikōwhai Group

**Pou Kapua Creations Trust**

NZ Charity Reg. Num: CC37676

Web: [www.poukapua.com](http://www.poukapua.com)



**Key Contacts**

Pou Kapua Creations Trust Executive		
Wikuki Kingi, Chairman	E: <a href="mailto:wikuki.kingi@gmail.com">wikuki.kingi@gmail.com</a>	T: +64 21 208 2140
Tania Wolfgramm, Deputy Chairperson	E: <a href="mailto:tania.wolfgramm@gmail.com">tania.wolfgramm@gmail.com</a>	T: +64 21 0876 1400

**Key Partner: Whaotapu Trust – Principle Contact: Vern Rosieur, Trust Chairman**



**WHAOTAPU**  
Cultural & Creative Solutions

[www.whaotapu.com](http://www.whaotapu.com)

THIS IS TO CERTIFY THAT

**Nga Whaotapu o Tamaki Makaurau Trust**

Has been assessed for contractor pre-qualification  
valid from 18 Mar 2020 - 18 Mar 2022

Project Management  
Category 1

+IMPAC  
**PREQUAL**

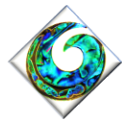
App ID 2724 Printed on 28 May 20 at 11:18 AM Page 9 of 10

Memberships



Kia ora Koutou  
Thanks for your support

POU KAPUA CREATIONS PARTNERS & ASSOCIATES



Sir Bob Harvey  
KNZM QSO



MANA WHENUA

MĀTĀWAKA

Te Ranga  
Academy

