



Kirikōwhai Group

Healing Waters
Sacred Lands

Cultural
Creative
Solutions

REMEMBERING WHAEA KIRIKŌWHAI KINGI

We honour the beautiful name of our wonderful Whaea and Kuia **Kirikōwhai Evelyn Rose Ivy (Tuss) Te Wiata Kingi** of Ngāti Māhuta, Ngāti Amaru, Ngāti Tamaoho, Waikato Tainui, and Raukawa. Kirikōwhai was the daughter of the great Māori opera singer and Tōhunga Whakairo the late Inia Te Wiata and Wakena Ivy Te Wiata. A resolute supporter of Te Kiingitanga and Waikato Tainui tikanga, she was raised under the guiding hand of the late Te Paea Hērangi and many Kaumatua and Kuia at Tūrangawaewae Marae where she grew up and learned the art of manaakitanga. In time, she became an amazing chef and was famous for many delicious recipes!

Kirikōwhai was married to Tōhunga Te Uranga o Te Rā Kingi of Te Whānau a Apanui, Ngai Tai, Whakatōhea, and Kāti Māmoe for many decades. With the blessing of Te Arikinui Te Atairangikaahu, and the support of their whānau and community, they created Kirikiriroa Marae, where she remained steadfast as Ahi Kaa and the Kuia of the Marae. Kirikōwhai and Wikuki were staunch advocates of Te Reo Māori and composed many waiata and haka that are widely sung throughout Aotearoa today.

Learning from her mother Wakena, traditional knowledge holders, elders, and her lifelong mentor Sister Heeni Wharemaru, Kirikōwhai had extensive experience and knowledge of the Waikato, the lands and river, plants, fish and water life, and of course she had a deep love for the whānau and hapū of the river. She understood the importance of the rongoā the river provided – spiritual, emotional, and physical. This love of the Waikato she imparted to her tamariki and many mokopuna, all of whom she loved dearly.

We hope that Kirikōwhai and Te Uranga o Te Rā watch over us as we work diligently to revive and beautify their wai and whenua, waters and lands.

*Haere atu rā kōrua
Ki te Mātua nui i te rangi
Te Poho o Te Atua
Haere atu rā, haere atu rā, moe mai rā.*



Kirik



Our Promise

*Across lands of icy snow
and mysterious mists;
rushing waters and
trickling streams;
lofty mountains and
verdant valleys ...*

*We seek our places and
our spaces – once again
And they seek us, call for us
– as they always have*

*Our Mother and Father,
Papatūānuku and Ranginui
-our Touchstones of Belonging*

*You are our healers,
our teachers, our guides
And we are your guardians,
your sentries, your friends*

*Together we are Kaitiaki
- our mauri binds us together
Forever ...*

*Here we learn, shape and share
our ancient wisdom,
tikanga, mātauranga,
symbols and stories*

*We breathe life again
into our wai, our whenua*

*As we honour and dignify
the mauri, the life-force,
spirit and grace of
our peoples and their places*

*... for our generations
past, present and future ...*



Kirikōwhai Group Our Vision

Our vision is to revitalise our
waters and lands; restoring their
mauri and beauty; creating
wonderful taonga, treasures, as a
gift for our tūpuna, whānau, and
mokopuna yet to come ...



Page

2	Remembering Whaea Kirikōwhai Kingi
3	Our Promise; Our Vision
4	Our Values and Principles
5	Mauri - Wānanga; Knowledge; Storytelling
6	Kōtahi - Whakapapa; Whānaungatanga
7	Planting & Garden Design
8	Eco-sourced Native Plants
9	Rural Property Development
10	Fencing – Construction; Maintenance
11	Taonga Creation; Multimedia Artworks
12	GIS Mapping; GIS Training
13	Technology VR AR XPs
14	Rangatiratanga – Thrive; Evaluation
15	Kirikōwhai Group - Our Team
16	Organisational Reporting Structure
17	Waikato – The River of Life
18	Waikato Project Results Framework
19	Organisational Information
20	Partners and Associates

KIRIKŌWHAI GROUP - Profile & Blueprint for Transformation

Prepared by Wikuki Kingi & Tania Wolfgramm

Tōhunga & Executive Trustees | Pou Kapua Creations Trust

E: tania.wolfgramm@gmail.com T: 021 0876 1400

kōwhai Group

KIRIKŌWHAI GROUP

Our Values, Our Principles

MAURI ... HONOUR AND ENHANCE LIFE FORCE

Spirit of Wai, Whenua, Whānau
Kawa / Tikanga / Ethical Engagement
Aroha & Compassion / Respect & Dignity
Restoration and Protection

RANGATIRATANGA ... LEAD AND THRIVE

- Cultural & Creative Leadership
- Positive Benefits for Māori
- **Wellbeing:** Cultural, Spiritual, Physical, Environmental, Economic
- **Celebrate:** Realise Vision; Share

KAITIAKITANGA ... GUARDIANSHIP & PRESERVATION

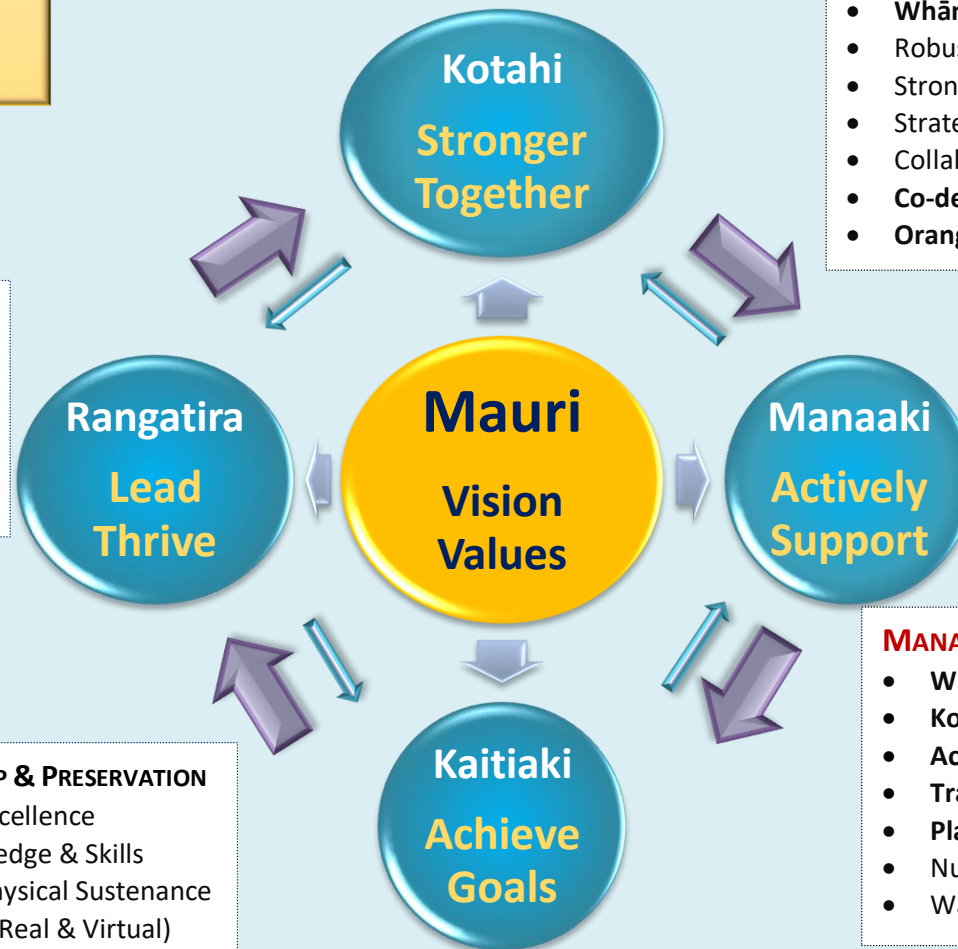
- **Tōhungatanga** – Creative Excellence
- **Mātauranga Māori** – Knowledge & Skills
- **Sustainability:** Spiritual & Physical Sustenance
- Create **Taonga** / Guardians (Real & Virtual)
- **Achieve:** Deliverables, Goals, Outcomes

KOTAHITANGA ... WORKING TOGETHER IN HARMONY

- **Whakapapa:** Genealogy; Ancestral Connections
- **Whānaungatanga:** Inclusive, Participative
- Robust & Dynamic **Organisation**
- Strong and Resilient **Relationships**
- Strategic Networks / **Partnerships**
- Collaborative **Decision-Making**
- **Co-design;** Strategise; Plan
- **Oranga:** Health and Safety

MANAAKITANGA ... WHOLE OF SYSTEMS SOLUTIONS

- **Whakamana:** Integrated, Holistic Approach
- **Koha:** Reciprocity and Generosity
- **Activate:** Implement; Operationalise; Innovate
- **Training;** Capability & Capacity Building
- **Planting** & Garden Design
- Nursery Development; **Riparian** Remediation
- Water & Land Protection & **Fencing**



Kirikōwhai Group is guided by an understanding that our whānau, hapū, iwi, and communities have multiple and unique worldviews and have ways of assessing merit based on their own value systems. Our Hakamana approach provides for an agreement of ethical boundaries; holistic integration, including mechanisms and processes for effective practice applied across complex and often chaotic environments.

KIRIKŌWHAI GROUP

Mauri	Life force / Wellbeing
Wairua	Spirit / Vision
Whakapapa	Name / Identity
Tinana	Body / Physical Condition
Manawa	Heart / Experience
Hinengaro	Mind / Learning
Kotahitanga	Relationship / Connection
Oranga	Health / Wellbeing
Mana	Strength / Authority
Te Ao	Environment / Context

Nā te aroha, ka puta mai te hōhonutanga o te whakaaro

First there is aroha; an understanding that all people, all taonga, all things share the pathway of life; appreciating that all are connected to each other and all must be cared for in the spirit of love.

Then there is a blossoming, a manifestation of the deepest knowledge that allows one's thoughts to be made known ... those thoughts, from the deepest recesses of the mind, realised in wananga, sharing learning, study, in other ways of seeking to know.

Wānanga - Tōhunga Te Uranga o Te Ra Kingi, 2008

Healing Waters, Sacred Lands

**MAURI
VISION**

MAURI ... HONOUR AND ENHANCE LIFE FORCE

Spirit of Wai, Whenua, Whānau

Kawa / Tikanga / Ethical Engagement

Aroha & Compassion / Respect & Dignity

Restoration and Protection

**Wānanga
Mātauranga**

KIRIKŌWHAI GROUP

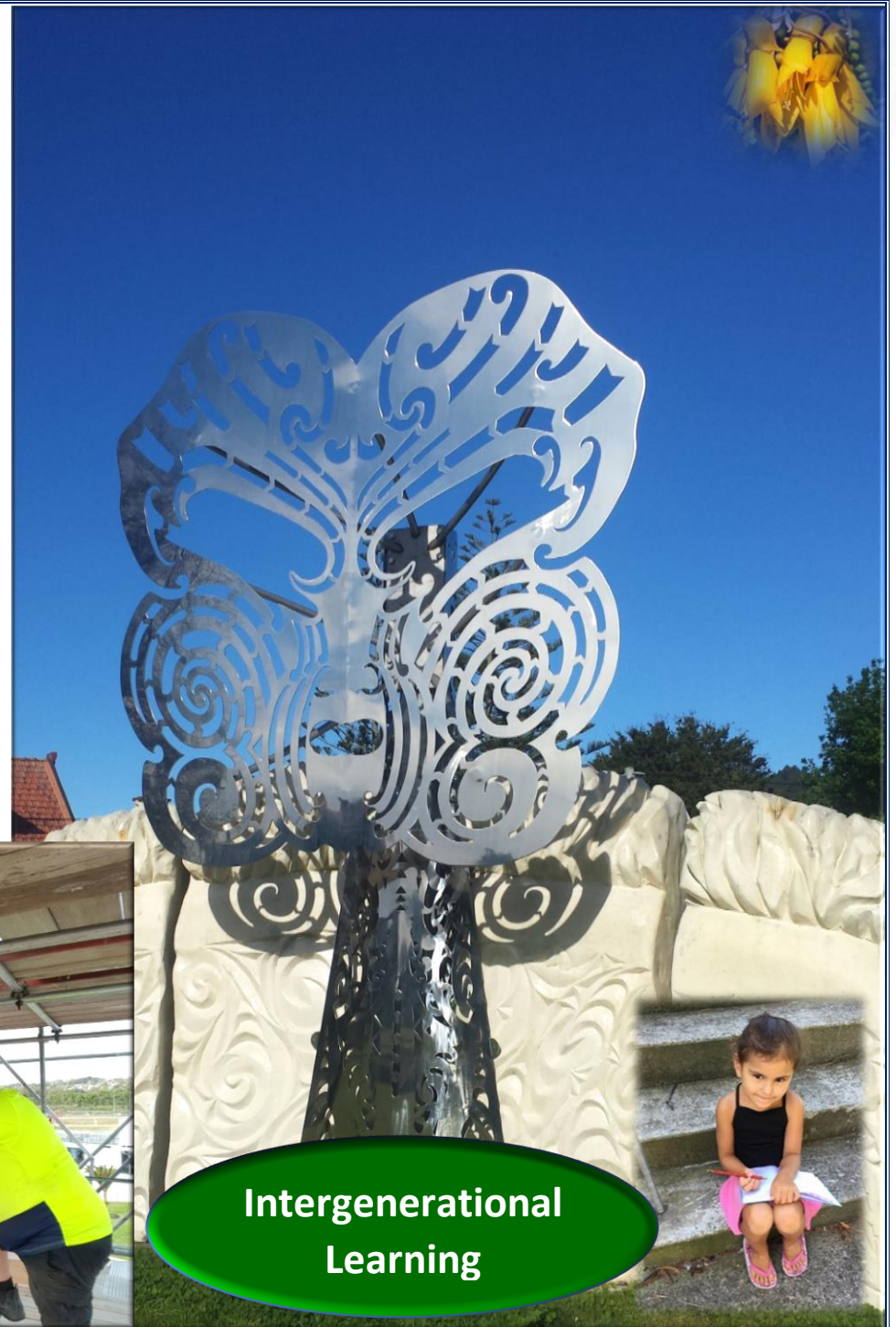
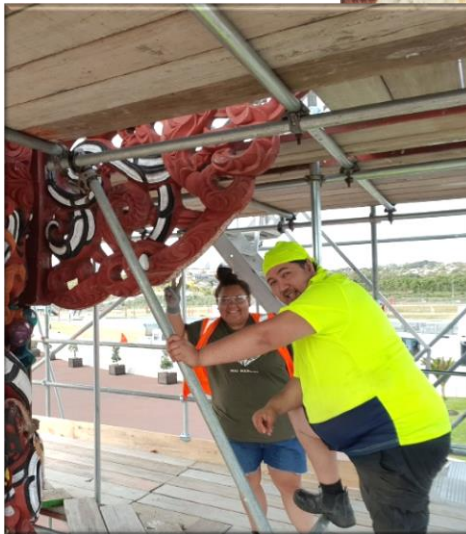


KOTAHITANGA ... WORKING TOGETHER IN HARMONY

- Whakapapa: Ancestral Connection to Place
- Whanaungatanga: Inclusive, Participative
- Robust & Dynamic Organisation
- Strong and Resilient Relationships
- Strategic Networks / Partnerships
- Collaborative Decision-Making
- Co-design; Strategise; Plan

KOTAHI
RELATE

Cultural
Intelligence



Intergenerational
Learning



KIRIKŌWHAI GROUP

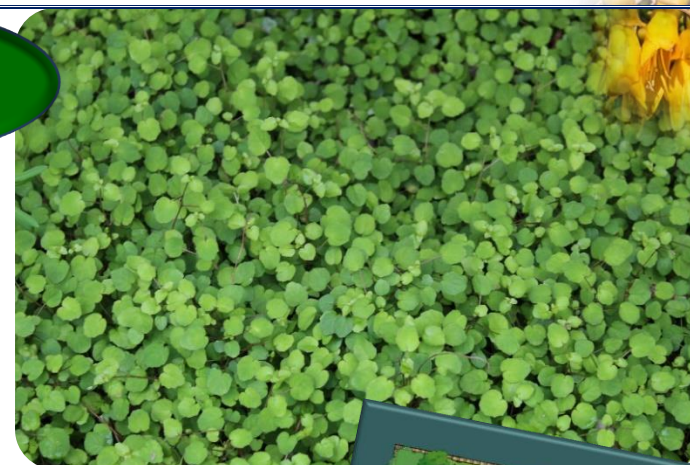
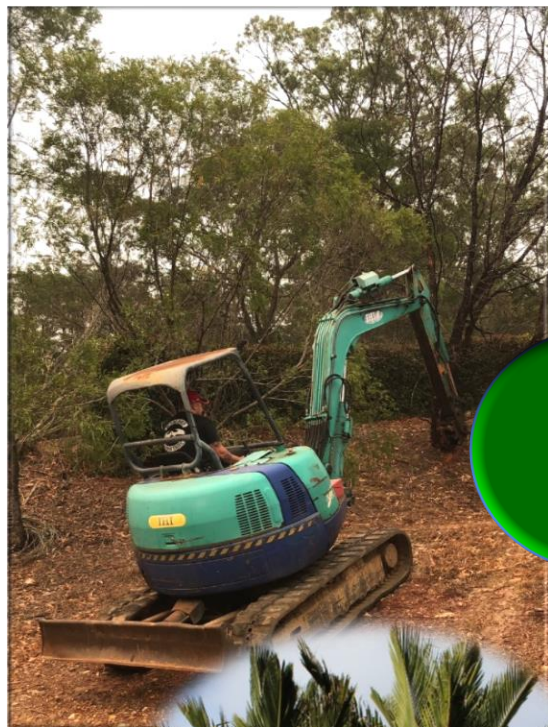
Planting

WONDERFUL RESULTS AND BENEFITS

- ✓ Beautiful native gardens
- ✓ Lands are nourished
- ✓ Plant life is nurtured
- ✓ A place for whānau and friends to enjoy
- ✓ Protection of taonga and puna
- ✓ Improved environmental outcomes

Site Prep

Garden Design



Eco-Sourced Native Plant Specialists

On the Waikato River

Te Mara
Reo

KIRIKŌWHAI GROUP



Kirikōwhai Group will work in partnership with Te Māra Reo, designing and developing fit-for-purpose plant nurseries and gardens focusing on native plants suitable for Waikato River environments.

Te Mara Reo has dozens of trees and plants whose whakapapa traces back across the vast Pacific over thousands of years – and whose names bear an amazing heritage and legacy!

Ethnobotanical
Research



Rural Property Development

LAND DEVELOPMENT AND SITE PROTECTION

- Stock logistics - cattle and horses
- Rural road design, construction and maintenance
- Excavation and ground / dirt work on a wide range of platforms; excavators through to track loaders
- Property plant and garden design and maintenance
- Slashing and cutting
- Tree works - planting, falling, milling, cutting splits, pruning, hedging
- Spraying and plant management
- Irrigation and dam design and construction
- Drainage systems
- Rural building design and construction (farm buildings, sheds)

PLANT & LIGHT VEHICLE MECHANIC | AUTO ELECTRICIAN | DIAGNOSTICS & LOGISTICS

- Electrical and hydraulic fault diagnostics
- Stationary and mobile diesel engines, including
 - Cranes
 - Excavation equipment
 - Boats and marine engines
 - Trucks, including concrete trucks
 - Motor vehicles
- Field service break downs
- PLC customising, installation, service and repair
- Radio control remote service and repair
- Welding and fabrication
- Product design, development, manufacture inc touch pad layout & throttle modules
- Electrical harness design and manufacturing

Vehicles & Maintenance

EXPERIENCED, LICENCED

OPERATORS

- Excavators
- Tractors
- Backhoes
- Forklifts
- Wheel and track loaders
- Heavy Trucks (Rigid & Articulated)
- Bulldozers
- Elevated Work Platforms (inc. boom lifts)



Fencing

Fencing gives you this amazing opportunity to see something for your work at the end of the day. It also gives you a strong connection to the land in which you are fencing. At the end of it you remember every ant mound, every rock, every waterway, every feature of that land, and you are somehow tied to that place as long as your fence stands, as a statement that 'you were here, and this is what you created'.

Years and years after a fence has been completed you can drive past that fence and put a smile on your face, remembering the trials that were in front of you, and how you could overcome them and create something great!

FENCING, GATES, RETAINING WALLS

- Fencing design, and installation; construction of fencing from various materials including wood and steel
 - post and rail
 - security; electrical
- Fence maintenance and restoration
- Gate design and installations
- Property entrances (e.g. front, back)
- Equestrian areas - quarantine, adjustment, dressage arenas, course yards
- Retaining walls design and building

Construction

A fence is a relationship, at times a compromise, between the flow of the land and the efficiency of straight lines. I am very particular when it comes to the preparation and assembly of fencing and I take the time to plan, and the time to finish, each fence to the highest of quality, keeping in mind that people will see my work for many years.

- Dusty Burrell, Master Fencer



Our fences will provide excellent protection for taonga and puna by keeping livestock out of those significant sites and protected areas.



Maintenance

HONOURING TŌHUNGATANGA ... EXPRESSING TE AO MĀORI ... EXPERIENCING ANCIENT FUTURES

KIRIKŌWHAI GROUP



We design and create Taonga Toi for Aotearoa that are evocative, inspiring, and truly transformative in multiple ways.

- Each and every Taonga Toi has wairua, tapu, mana; each has mauri, a life-force that needs to be nurtured, cared for and protected
- Taonga Toi are symbols of our culture, spirit and identity; reflections of Tangata Whenua heritage; expressions of Te Ao Māori
- Taonga Toi can teach and heal through expressions of ancient knowledge, traditional stories and contemporary understandings
- Taonga Toi provide unique positive emotional experiences for each mokopuna, tamariki, wāhine, tāne, koro, kuia, whānau, the communities of Aotearoa



Taonga Creation

AMAZING TREASURES; WONDERFUL BENEFITS

- Taonga, Pou embody whānau, hapū, iwi stories and histories
- Everyone enjoys the beauty and wonder of the taonga
- Nurtures a strong sense of belonging
- Brings pride and joy to mana whenua and local communities

KAITIAKITANGA ... GUARDIANSHIP & PRESERVATION

- Tōhungatanga – Creative Excellence
- Mātauranga Maori – Knowledge & Skills
- Sustainability: Spiritual & Physical Sustenance
- Create Taonga / Taniwha / Guardians



Multimedia Artworks





KIRIKŌWHAI GROUP

GOOGLE GEOSPATIAL TOOLS

Google has a wide range of Geo-spatial tools these include Google Earth, Google Earth Engine, Time Lapse, My Maps, Fusion Tables and Tour Builder. They each have a specific purpose and can provide some stunning visual imagery for work that you would like to undertake.

GIS Training

GIS Training: Wānanga and workshops around creating, manipulating and presenting data for your organisation
Google Geospatial Tools: We provide training with these tools and can show you how to maximise these with other GIS tools.



Group

GIS Mapping

GIS Data Capture: Sourcing and building the data i.e. land parcels

GIS Data Analysis: Analysing the information and interpreting the data flow

GIS Map Production: Producing the map outputs
GIS Project Management and Build: Managing the construction of a GIS

GIS Needs Analysis: Identifying the organisational needs and providing recommendations around GIS requirements

Data Analysis & Management

EXCELLENT MAPPING RESULTS

- ✓ Comprehensive maps and 3D imagery accessible in multiple platforms (e.g. Google Earth)
- ✓ Accurate GPS and GIS geospatial data (longitude & latitude)
- ✓ Family and friends can connect virtually from anywhere in the world
- ✓ Excellence navigation and directions capability (including landmarks)
- ✓ Improved environmental and disaster planning and response
- ✓ Increased capability with technology training and business development
- ✓ Authentic stories and local knowledge shared on global platforms

Sacred Sites and Sites of Significance

Identification, mapping, depiction, and information of sites of significance, presentation



Drone Photography: We use DJI's drones to produce high quality still imagery and video footage which we can then incorporate into our mapping services.

WE SUPPORT CULTURAL CONSERVATION WITH THE LATEST TECHNOLOGY

Many of the world's cultural and natural heritage sites are under threat from both people and environment. Many of these cultural and natural treasures, some built by people, others by nature may not be available for people to see and experience, and our dream is to bring the stories, histories, and legends of these incredible treasures to life in virtual reality.

Collectively we have decades of experience and expertise across multiple capabilities including design; data science and analytics; technological and platform design and development; immersive (Virtual / Augmented / Mixed Reality) experience technologies; digital storytelling, media production and product development, and platform development. We combine the latest in digital innovation and world-class VR technology to create incredible 'being there' digital and online experiences that can help to shape our age – and the hearts of minds of generations to come.



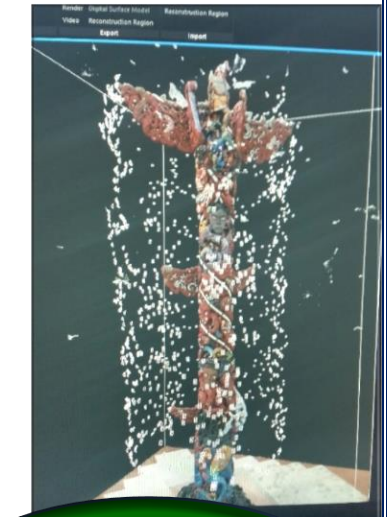
Authentic stories and local knowledge shared on local and global platforms

KIRIKŌWHAI GROUP

SENTIO ERGO SUM



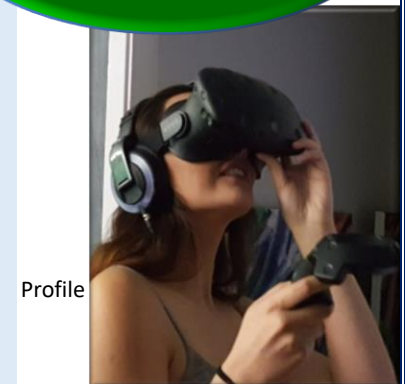
**Technology
VR AR XPs**



**Virtual
Reality POU**

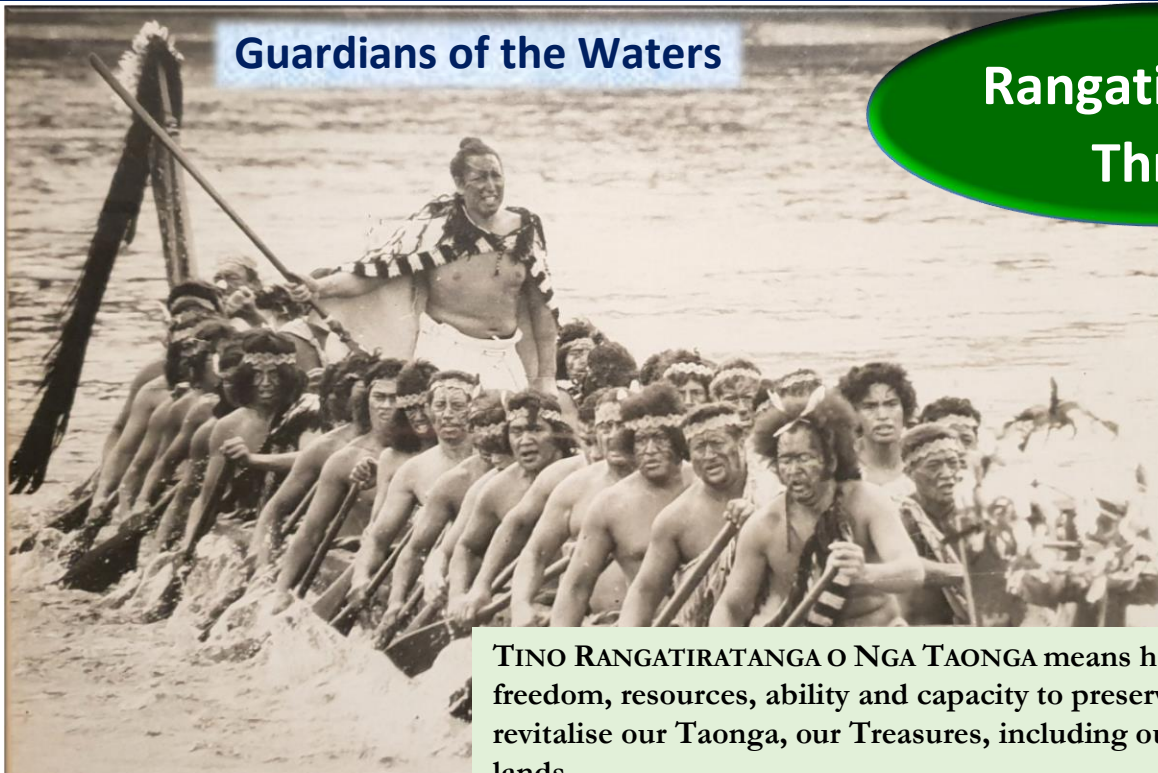
LET'S CREATE SOMETHING UNIQUE AND REMARKABLE!

Kirikōwhai Group can create wonderful cultural treasures in virtual reality. These VR treasures will express stories of your hapu, iwi, culture, lands, people, histories and legends. We co-create the best multisensory VR and AR experiences and technological adventures that will change the way people sense the world; awakening and strengthening their relationships to place, space, humanity and to nature.



Profile

Guardians of the Waters



KIRIKŌWHAI GROUP



Rangatiratanga Thrive

TINO RANGATIRATANGA O NGA TAONGA means having the freedom, resources, ability and capacity to preserve, restore and revitalise our Taonga, our Treasures, including our waters and lands.

It means that we can create, generate, design, develop, produce, and distribute creative works, arts, and technologies that express and support the mana of tangata whenua, the values, culture, tikanga and protocols, approaches and methods, language, histories, stories, worldviews, knowledge, and learning systems of Te Ao Māori.

For Māori, TINO RANGATIRATANGA O NGA TAONGA means the activation and support of a complete yet dynamic ecosystem that supports Māori as active owners, creators, designers, developers, builders, manufacturers and traders of creative works, arts, and technologies that increase Māori wealth and improve their cultural, social, ecological, and spiritual health and wellbeing across multiple domains.

*Wānanga – Wikuki Kingi & Tania Wolfgramm,
Kirikōwhai Group, Pou Kapua Creations*



RANGATIRATANGA ... LEAD AND THRIVE

- ✓ Cultural & Creative **Leadership**
- ✓ Positive **Benefits** for Māori
- ✓ **Wellbeing:** Cultural, Spiritual, Physical, Environmental, Economic
- ✓ **Celebrate:** Realise Vision; Share Success

Transformative Evaluation



Our HAKAMANA Model of Evaluation

- Integrates Indigenous wisdom with modern methodologies;
- Enables one to move through complex systems and dynamic relationships as you focus on their interactions; and
- Provides a framework for one to create robust solutions to complex problems.
see also www.hakamana.com

KIRIKŌWHAI GROUP - OUR TEAM



Dr Richard Benton
Language Historian
Planting Specialist



Ratauhinga and Takirimaiteatea Turner
Ko Taupiri te Maunga, Ko Waikato te Awa
Kaumatua mo te Kiingitanga
Turangawaewae, Waikato Tainui



Mamae Takerei
Turangawawae Waikato
River Culture Expert



Johanna Burrell
Project / Portfolio
Management



Dustin Burrell
Rural Development
Fencing Specialist



Isaac Rolfe
Computer Scientist
Software Platforms



Wikuki Kingi
Tōhunga Toi Ake
Cultural Symbolologist



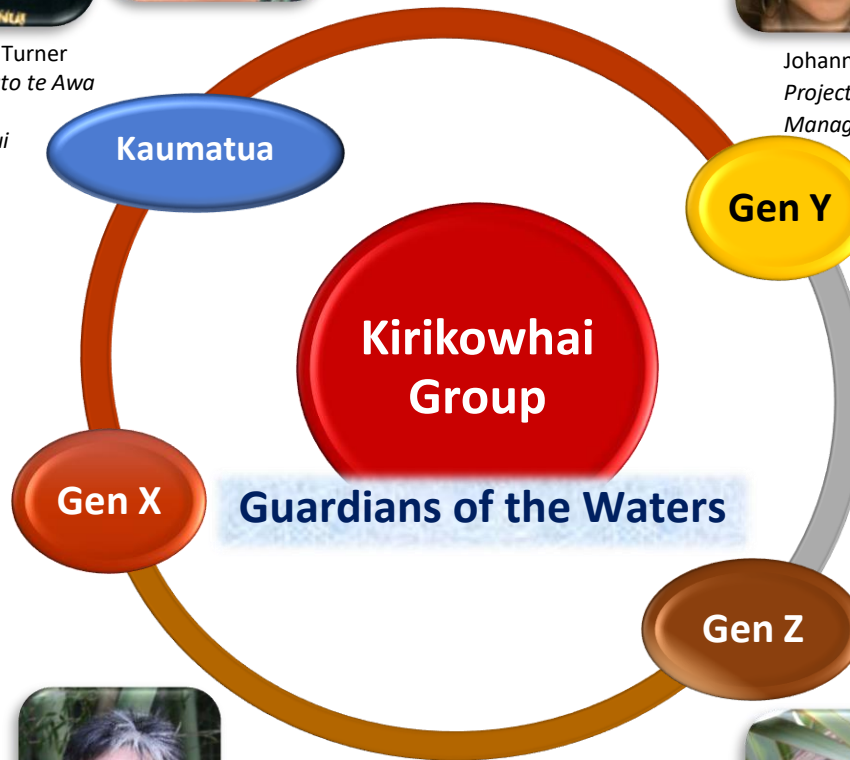
Tania Wolfgramm
Executive Director
Systems Sculptor



Moka Apiti
GIS Specialist/ UAV
Geospatial Mapping



Dr Rachel Wolfgramm
Specialist - International
Business & Sustainability



Whitney Hamilton
Plant & Garden
Design Specialist



Rainui Teihotua
Design Specialist
Digital Narration



Lee Wilson
Construction
Project Design



Alan Benton
Communications
Project Logistics



Aliyah Waimirangi
Kainga Toi / Designer
Rangatahi / Youth Rep



Tawhirimatea Rosieur
Kainga Toi / Arts
Maintenance



Darcy Russell
Kainga Toi / Media
Garden Development



Vincent Wolfgramm
Mathematician
Environmental Scientist



Ashlin Rolfe
Kainga Toi
Creative Writer

Kirikōwhai Group Alliances

- Whaotapu Trust
- Te Ranga Arts Academy
- Data Sovereignty Network
- Native American Academy
- Indigenous Education Institute
- Auckland University of Technology (AUT)
- The Cultural Conservancy | TE HA Alliance
- University of Auckland (UoA) School of Business
- Local Hapū / Iwi / Communities across Aotearoa NZ
- Pacific Networks & Global Indigenous Alliances

Expert Advisors

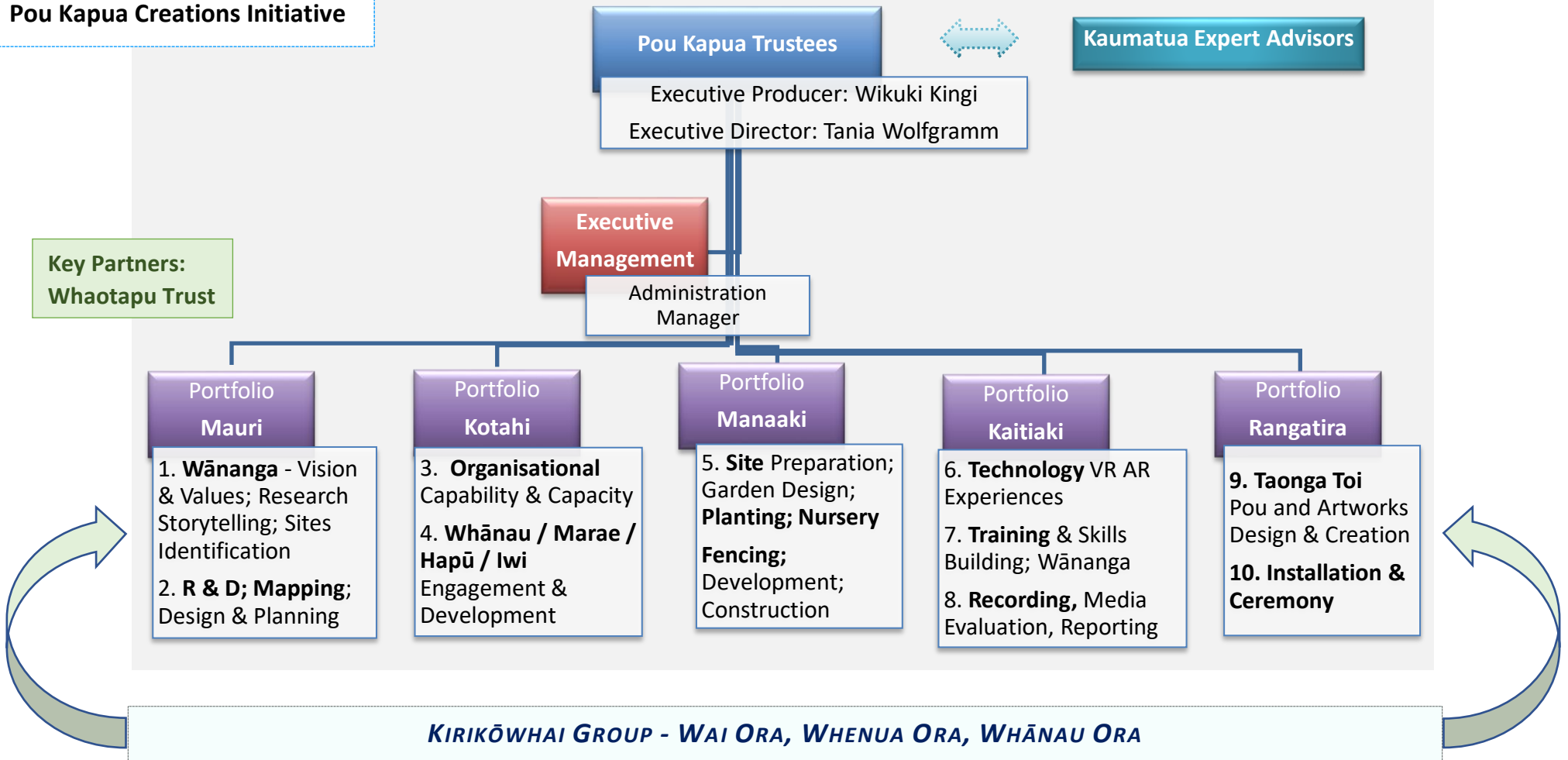
- Martin Matekino Ngataki, Waikato-Tainui Kaumatua
- Vern Rosieur, Tōhunga Toi Ake, Whaotapu Trust
- Charles Harrison; Plant / Propagation Specialist



ORGANISATIONAL REPORTING STRUCTURE AND PORTFOLIOS

Kirikōwhai Group is a
Pou Kapua Creations Initiative

Key Partners:
Whaotapu Trust



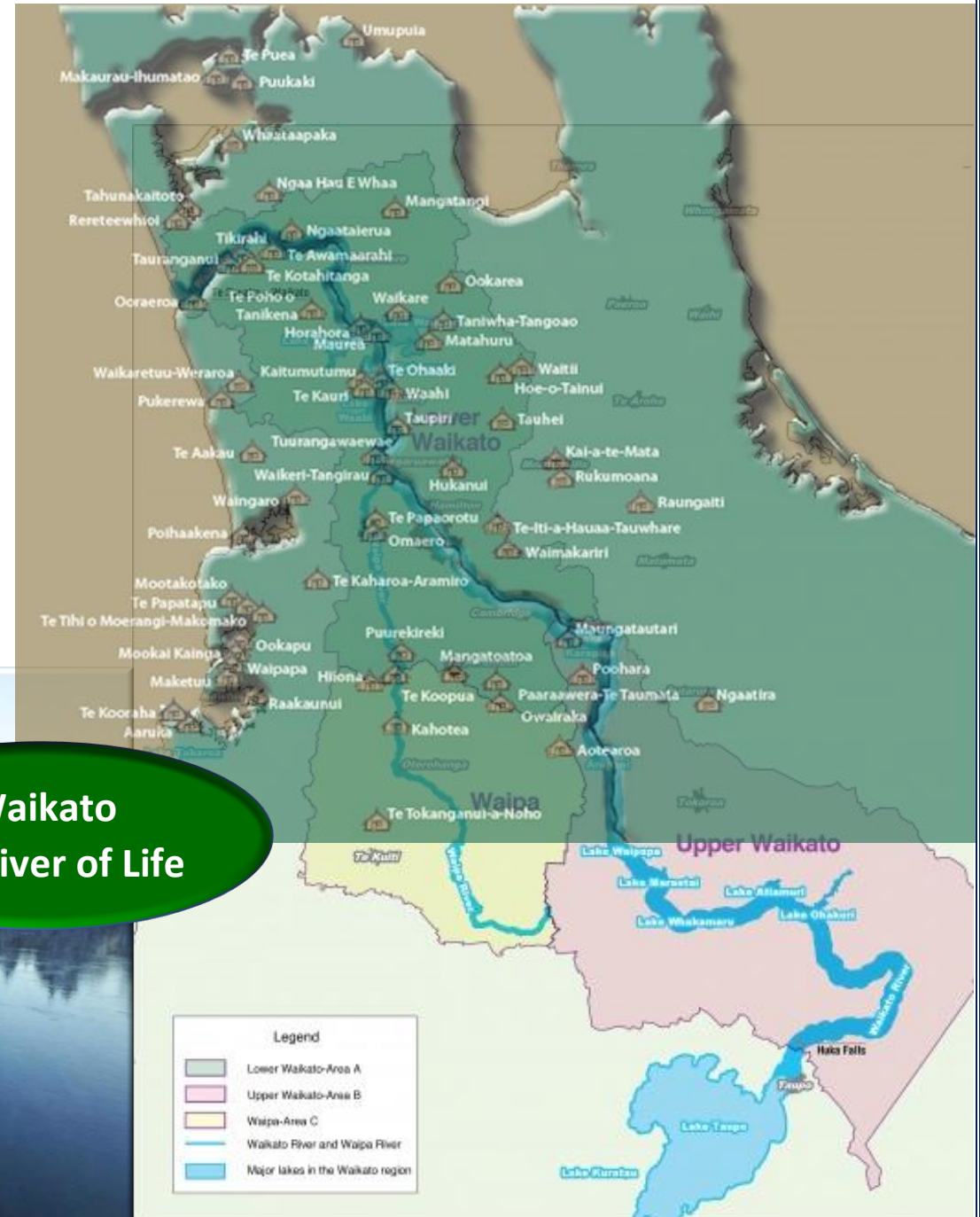


Tooku awa koiora me ngoona pikonga
He kura tangihia o te maataamuri

Kiingi Taawhiao

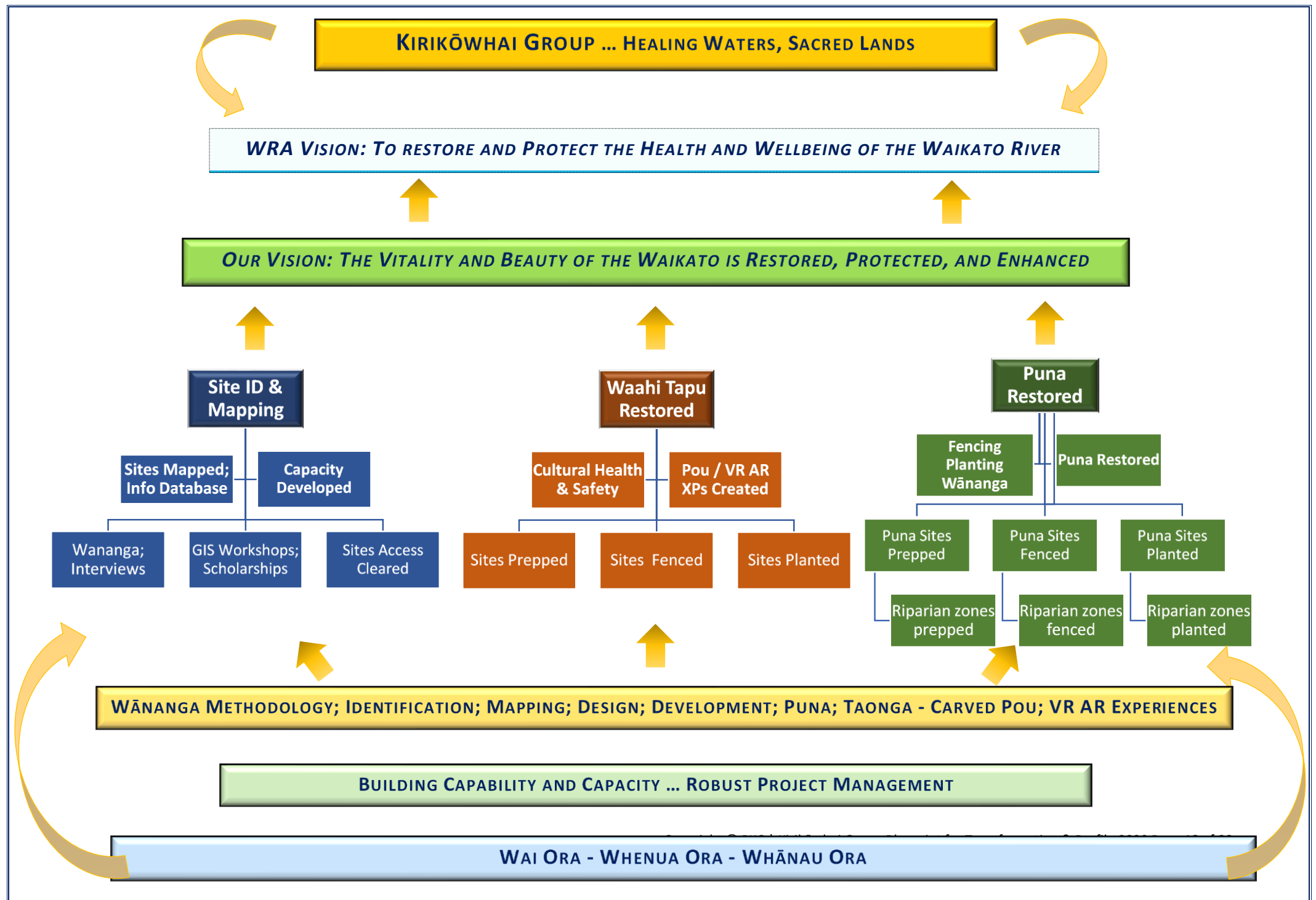
The river of life, each curve
more beautiful than the last

Waikato-Tainui Iwi; 33 Hapuu; 68 Raupatu Marae; 68,000+ Tribal Members



Waikato
The River of Life

Kirikōwhai Group supports the vision of Waikato Tainui iwi and hapuu to exercise mana whakahaere of their rohe; their authority, rights and responsibilities to ensure that the mauri, the life force of their river and lands are restored and protected - for now and for generations to come...





Registered / Legal / Contracting Entity for Kirikōwhai Group

Pou Kapua Creations Trust

NZ Charity Reg. Num: CC37676

Web: www.poukapua.com



Key Contacts

Pou Kapua Creations Trust Executive		
Wikuki Kingi, Chairman	E: wikuki.kingi@gmail.com	T: +64 21 208 2140
Tania Wolfgramm, Deputy Chairperson	E: tania.wolfgramm@gmail.com	T: +64 21 0876 1400

Key Partner: Whaotapu Trust – Principle Contact: Vern Rosieur, Trust Chairman



www.whaotapu.com

THIS IS TO CERTIFY THAT
**Nga Whaotapu o Tamaki Makaurau
Trust**

Has been assessed for contractor pre-qualification
valid from 18 Mar 2020 - 18 Mar 2022



Project Management
Category 1

+IMPAC
PREQUAL

App ID 2724

Printed on 28 May 20 at 11:18 AM

Page 9 of 10



Memberships



Kia ora Koutou
Thanks for your support

POU KAPUA CREATIONS PARTNERS & ASSOCIATES

KIRIKŌWHAI GROUP

MANA WHENUA



Digital Navigators
GIS Mapping Consultants
Te Ipu Arataki i te Taiao
Providing Indigenous Digital Solutions



Te Ranga
Academy

te māra reo
the language garden



Auckland
Tourism, Events and
Economic Development
An Auckland Council Organisation



Sir Bob Harvey
KNZM QSO



≈ RIVER



Copyright ©



up Blu

